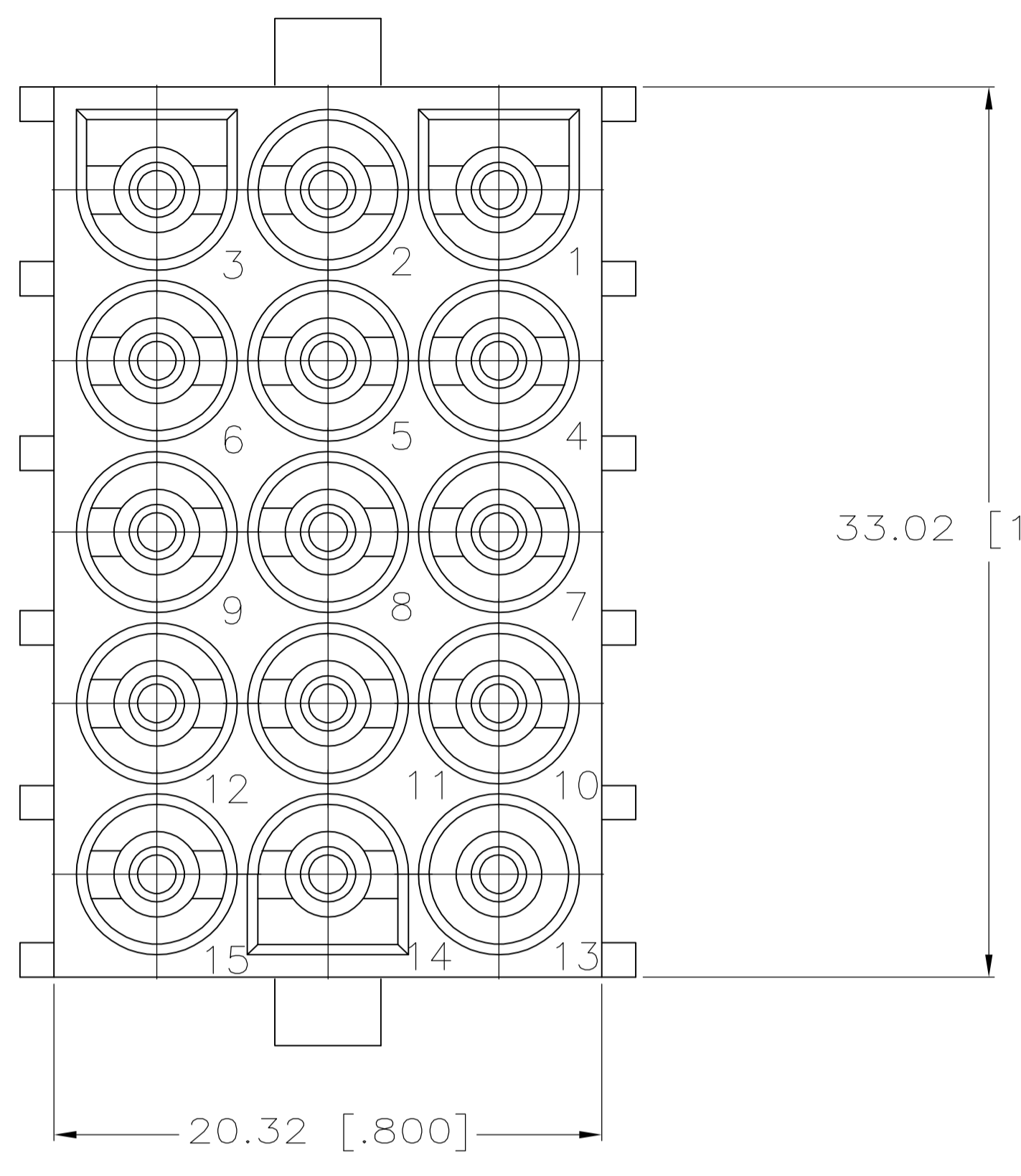
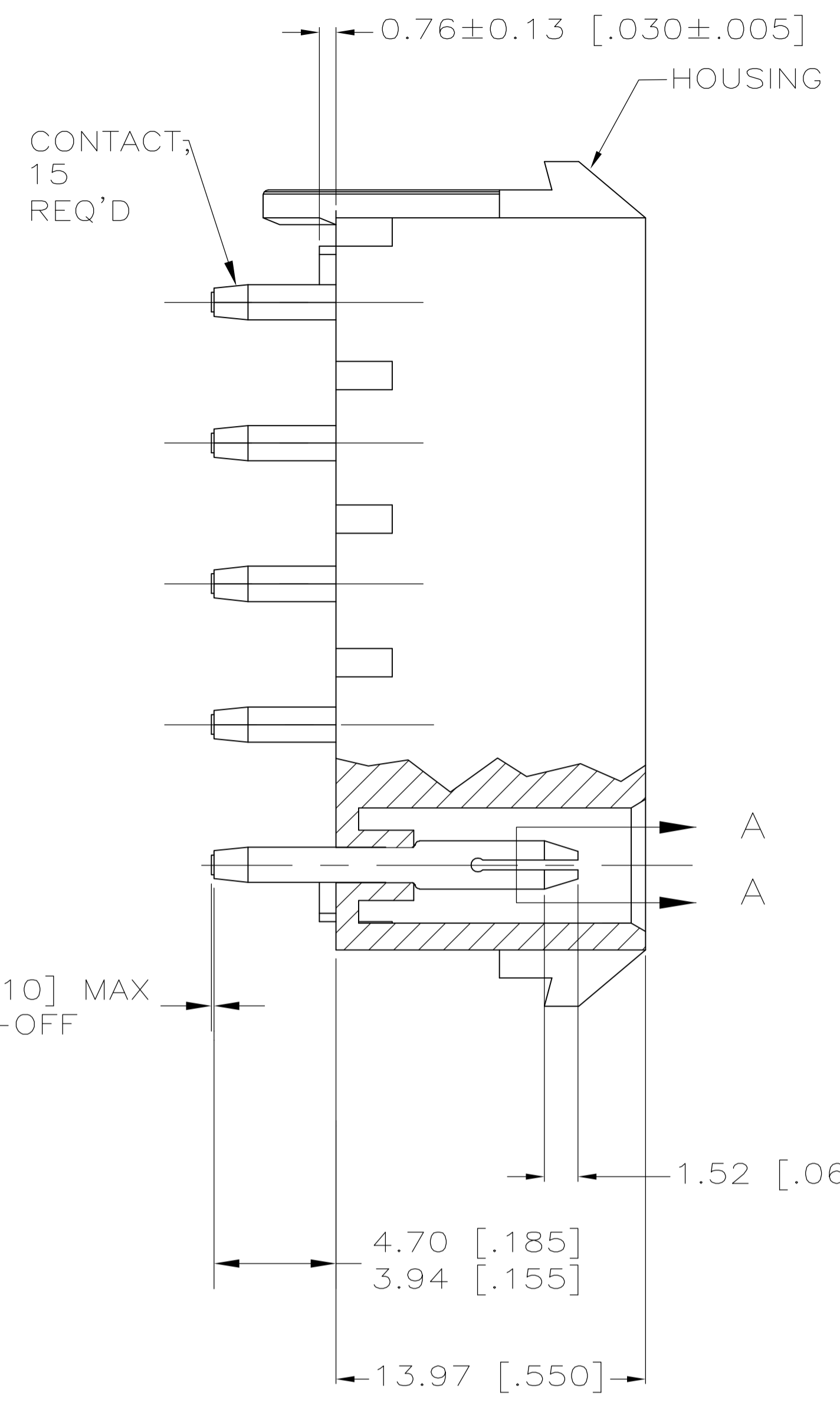
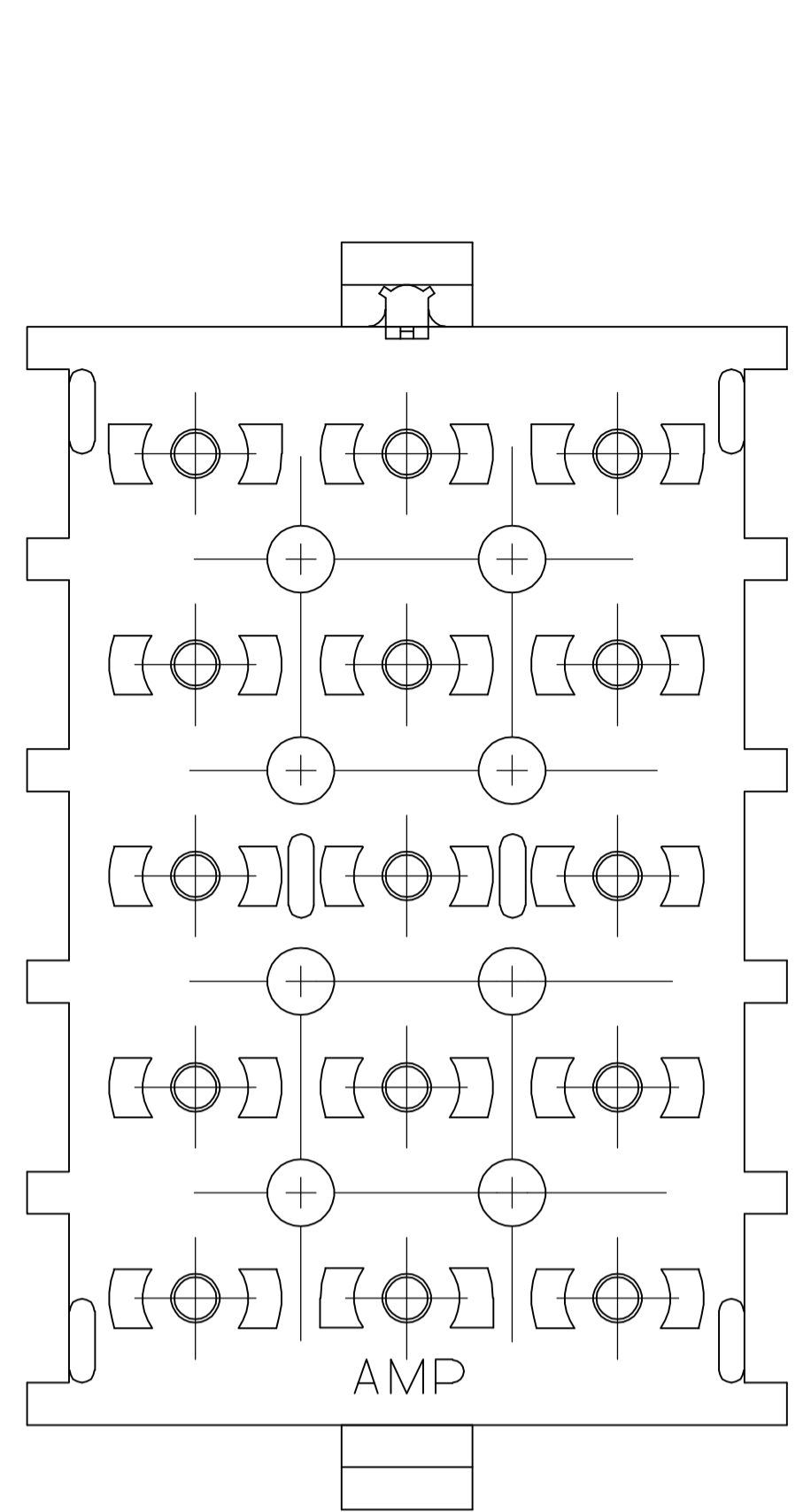
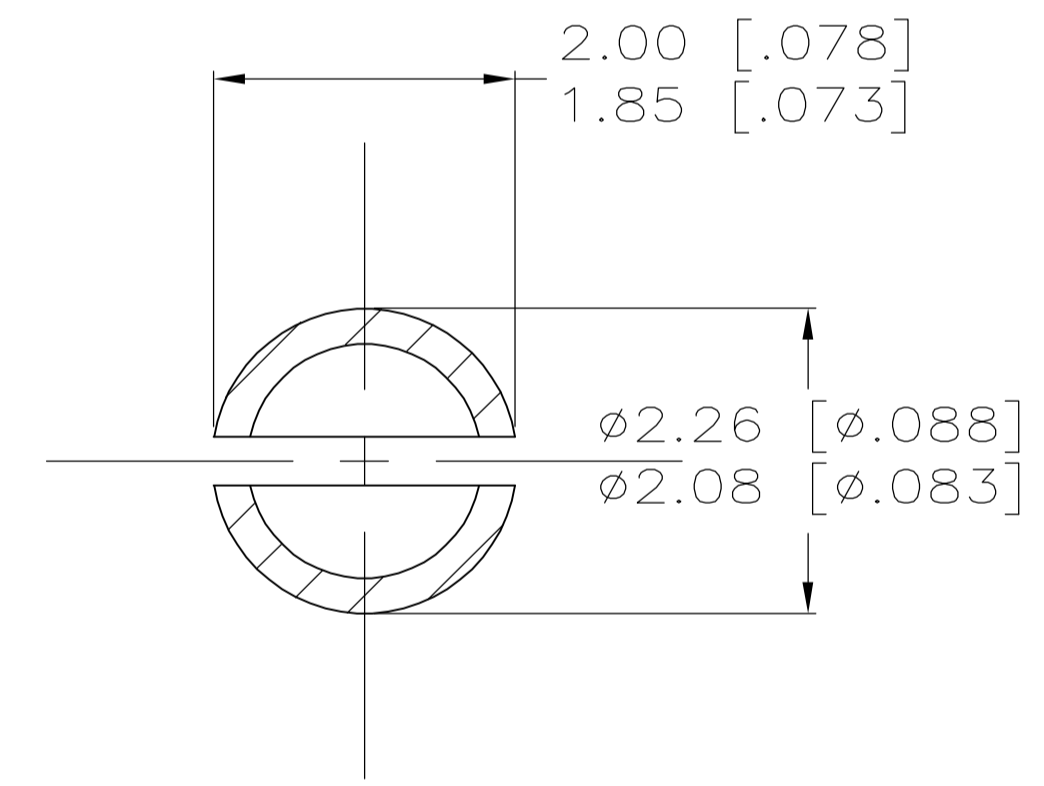


LOC		DIST		REVISIONS			
CM	00	REV	DATE	BY	CHK	APPV	
		K	14OCT2005	REVIS PER DC38-1208-04	KW	SR	

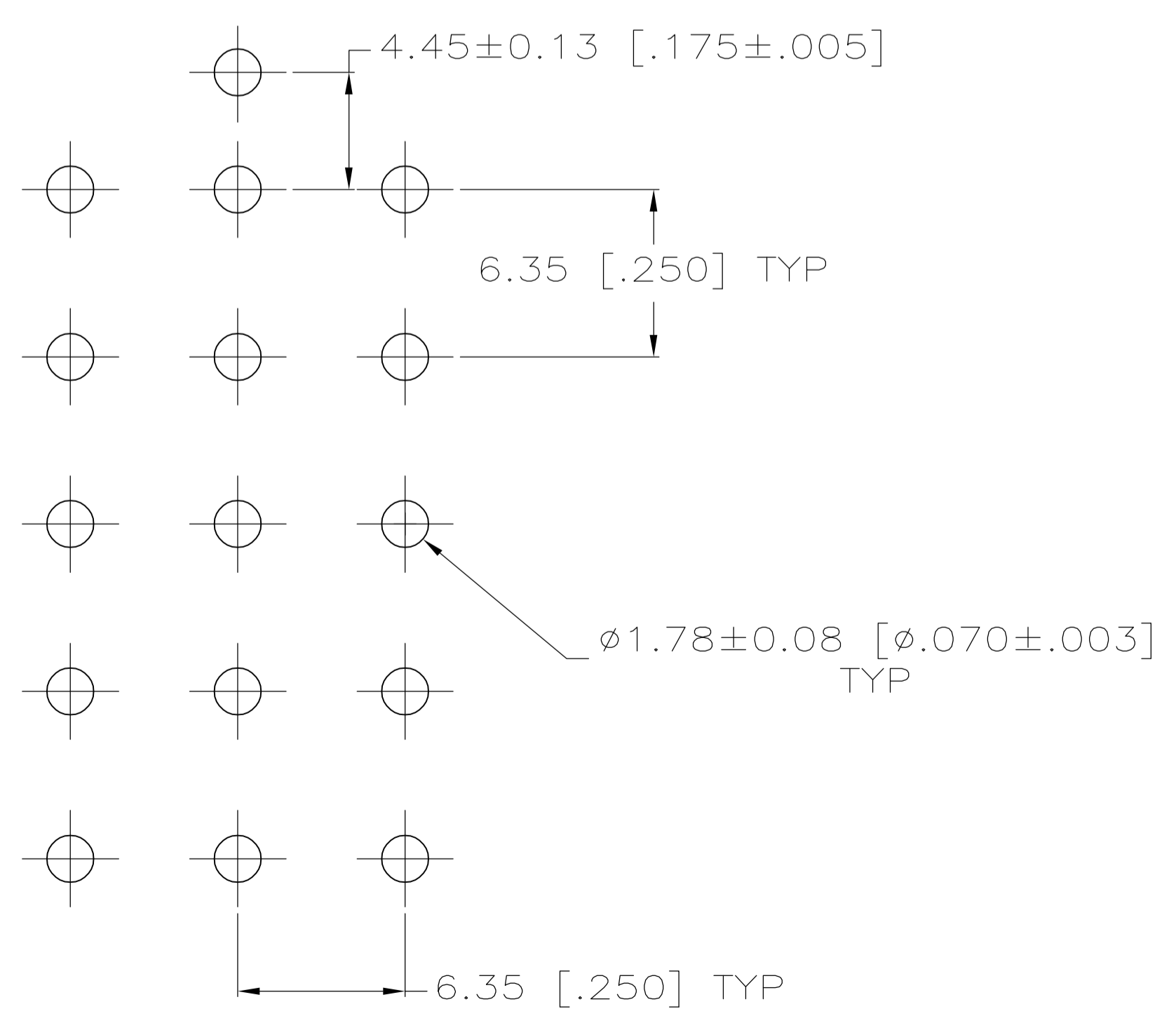


- PARTS MUST COMPLY WITH AMP SOLDERABILITY SPEC 109-11-3.
- MATES WITH HOUSING NO. 350736 USING SOCKET CONTACTS.
- CONTACT IS STAMPED FROM PRE-PLATED STOCK WHICH IS PLATED OVERALL WITH 0.00127 [.000050] NICKEL, THEN STRIPED WITH 0.00076 [.000030] GOLD IN CONTACT AREA INDICATED AND TIN-LEAD ON SOLDER TAIL END.
- CONTACT IS PLATED OVERALL WITH 0.00127 [.000050] NICKEL, THEN 0.00076 [.000030] GOLD OVER CONTACT LENGTH INDICATED AND MATTE TIN ON SOLDER TAIL END.

0.25 [.010] MAX CUT-OFF



SECTION A-A
SCALE 12:1



RECOMMENDED LAYOUT FOR 1.58 [.062] THICK PC BOARD

PH BRZ GOLD Δ 4	NYLON, UL94V-0	641976-4
PH BRZ GOLD Δ 3	NYLON, UL94V-0	641976-2
PH BRZ TIN	NYLON, UL94V-0	641976-1
CONTACT	HOUSING	PART NO

METRIC

THIS DRAWING IS A CONTROLLED DOCUMENT.

DIMENSIONS: mm (INCHES)	TOLERANCES UNLESS OTHERWISE SPECIFIED:	0 PLC ±	1 PLC ±	2 PLC ±	3 PLC ± 0.13 [.005]	4 PLC ±	ANGLES ±	FINISH
MATERIAL SEE CHART								

OWN: K. WHITAKER	14OCT2005	Tyco Electronics Corporation Harrisburg, PA 17105-3608
CHK: S. RIDGILL	19-NOV-2003	
APPV: S. RIDGILL	19-NOV-2003	NAME: S. RIDGILL
PRODUCT SPEC	APPLICATION SPEC	SIZE: A1
WEIGHT	SCALE: 5:1	CAGE CODE: 00779
CUSTOMER DRAWING	SCALE: 5:1	DRAWING NO: 641976

RESTRICTED TO: SHEET 1 OF 1 REV K